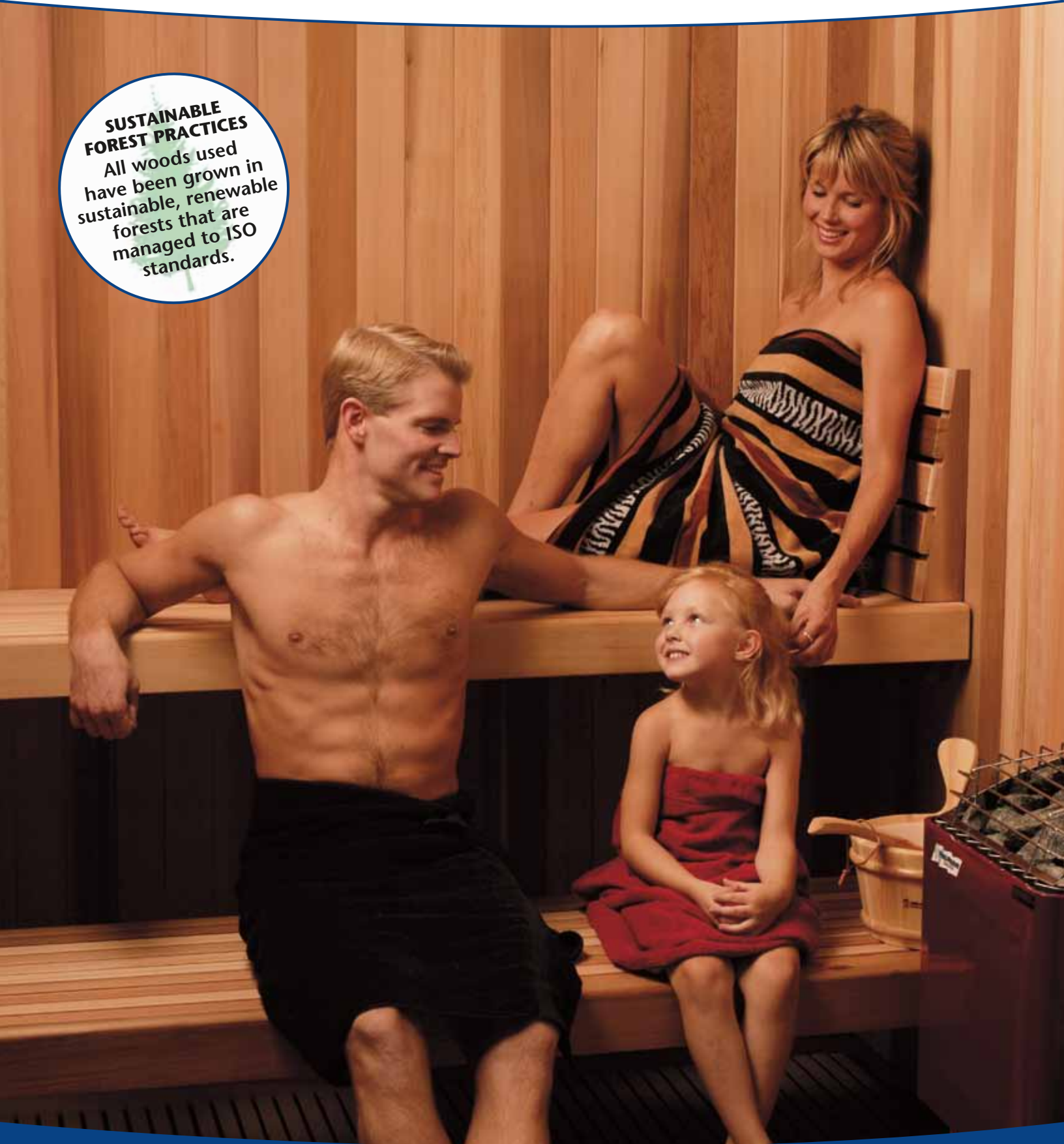


SUSTAINABLE FOREST PRACTICES
All woods used have been grown in sustainable, renewable forests that are managed to ISO standards.



Our prefab modular Saunas are available in many standard sizes, or we can custom build them to suit your needs. See pages 8 and 9 for some of the standard sizes available. FPF56 Western Red Cedar room interior shown.

Proudly Made in the U.S.A.



OUR UNIQUE LOCKING SYSTEM GUARANTEES FASTEST AND EASIEST ASSEMBLY, STRONGEST INSTALLATION, AND MOST CUSTOM LOOK. PPF IS SHOWN WITH WESTERN RED CEDAR INTERIOR.

FPF Packages Include:

FRAMING: 2" x 2" Oregon Douglas Fir to prevent warpage and dry rot. Frame fastened with galvanized fasteners.

INSULATION: R11 (3½") Fiberglass with paper back—walls and ceiling.

VAPOR BARRIER: Type C Building Foil on walls and ceiling.

BASE: 2" x 4".

EXTERIOR SIDING: ½" ruff-sawn mahogany plywood. Option—½" x 4" T&G Western Red Cedar.

INTERIOR PANELING: Walls and ceiling of 1" x 4" clear, A Grade, kiln-dried, T&G small v joint for neat appearance—choice of clear Western Red Cedar (standard), clear Redwood, clear Alaska Yellow Cedar, and clear Western Hemlock.

EXCLUSIVE CONCEALED LOCKING SYSTEM: Locks walls together with greatest strength and neatest appearance (eliminates need for ugly interior moldings—used by others).

BENCHES: Constructed of S4S 2" x 2" tops with ⅜" spacing, S4S 2" x 4" facing with eased edges to eliminate sharp angles and splinters; all fasteners are applied from bottom to eliminate ugly nail holes and the danger of nails popping up to burn bather.

HEAD/BACKREST(S): For upper bench(es); tapered 14 ⅝" x 18 ½".

PREHUNG CLEAR GLASS DOOR: V.G. Oregon Douglas Fir rails to prevent warpage, tempered, ½" thermopane glass unit for spacious open look, Hemlock jamb, stoppers, casing and threshold; hardware—(3) 4" x 4" butt hinges (chrome plated), roller or ball catch (keeps door securely closed), 2 wooden door pulls; door section slides into position and stays in place.

HEATER FENCE: For safety—2" x 4" and 2" x 2".

SUPER DEK or EURODEK: Removable flooring for walking area—washable, sanitary, synthetic material. Per specs page 22.

VENTS: Lower vent is neatly cut into room base; upper vent set (V10 white) supplied for pre-cut space. Option—V5 cedar vent.

LIGHT: Vapor-proof, wall-mounted #P5511. Satin aluminum finish.

TRIM: For exterior and interior ceiling.

FINLANDIA HEATER: Controls on heater standard up to 7' x 8' room.

STONES: Peridotite, igneous type from Finland—best for heat retention and safety.

ACCESSORIES: Wooden bucket #102N with bucket liner, dipper #106/40, wooden thermometer #0301K, light switch, bronze plexiglass bathing sign.

INSTRUCTIONS: DVD for assembly.

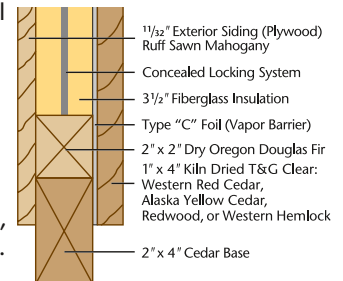
Our prefab Saunas are engineered with effortless and fast installation in mind, and can be installed on any level, hard-surfaced, waterproof floor. Our unique interlocking design makes other modular systems obsolete by comparison. Electrical conduit is made easy because all electrical conduit is sealed within walls, and control box (where necessary) is pre-mounted. Engineered for highest economy, with an R value of 13.5 (exceeding other modular Saunas on the market) our prefabs are also designed with 2 vents to allow a natural exchange of air, for comfort and fresh air supply for the bather. Our *FINLANDIA* prefabs are not only designed for best function and eye appeal, but are manufactured with "old country" craftsmanship—we craft each room like a fine piece of Scandinavian furniture.

FPF Saunas have a finished height of 6'6" (FPF34), 7'0" (FPF35 to PPF78) and 7'2" for PPF88 and larger. At least 3" ceiling clearance and wall clearance is needed for assembly.

FPF CONSTRUCTION

FINLANDIA prefab Saunas are complete, freestanding, self-contained rooms. They can be put anywhere you have an open space. You must provide the waterproof floor (concrete, tile, or vinyl) and electrical wire.

FPFs contain all interior and exterior parts. The locking system inside each panel connects without any screws, splices or bolts.



Note: Modifications to the Sauna room are possible for wheelchair accessibility.



FPF FINLANDIA PREFAB PACKAGE IN WESTERN RED CEDAR.

FPF wall panels are engineered with an internal locking system for easiest assembly.

Panels, approximately 2' w x 7' h x 2 ½" d, are finished with wood on both sides. Metal conduit and rough in boxes are factory installed for the wall light, light switch, heater and control (if ordered). Electrical enters conduit from the top of the Sauna room.

FINLANDIA Prefab Sauna Choices & Options

Our FINLANDIA Outdoor Sauna is the best insulated outdoor Sauna on the market.

You provide the waterproof pad, and we supply the insulated modular room complete with roof package. The FINLANDIA Roof Package includes: wood plates, prefab rafters, nailers, fascia, metal flashing, cedar shingles, ridge cap, and nails. The roof must be built from these package parts. Tar paper not included. The roof overhangs 12" at the front and 6" on all other sides.

The FINLANDIA Outdoor Sauna is available in sizes ranging from 4'x4' to 8'x8'. Roof kit not available for 5-sided rooms. Peak height is 8'6" to 9'8" depending on room size.



FPF66 SHOWN WITH ASSEMBLED ROOF THAT YOU BUILD FROM OUR FRP66 PACKAGE. OPTIONS ARE NEGATIVE ETCHED GLASS SAUNA DOOR DESIGN AND CEDAR EXTERIOR.



FPF66 SHOWN WITH STANDARD EXTERIOR OF FINE-GRAIN RUFF-SAWN MAHOGANY WITH OPTIONAL TOWEL HANGER. EXTERIOR CAN BE PAINTED OR STAINED TO MATCH YOUR DECOR.

EXCLUSIVE PREFAB OPTION: 5-SIDED SAUNA—FPF66-5S

A popular product from our prefab department is the exclusive five-sided modular Sauna. Pictured is the 6'x6' size with 7' ceiling. This beautiful room is a showpiece for home or office. The full glass door and clear glass windows in the two side walls offer a spacious open feeling for the bather.



We offer a choice of one of our four clear Western woods for the interior and visible exterior walls. All other specs are as per page 7. Also available in 4'x4' to 8'x8' sizes.



FINLANDIA PPF66-5S FIVE-SIDED SAUNA WITH INTERIOR AND EXTERIOR OF CLEAR WESTERN RED CEDAR. TWO SIDELIGHTS, CEDAR VENT, TOWEL HANGER, AND WALL CONTROL ARE OPTIONS.

FINLANDIA SAUNA OFFERS A CHOICE OF THE WORLD'S BEST SAUNA WOODS: All of our Sauna models can be specified with one of the softwoods shown below. We use only the finest clear, grade A, 1" x 4" tongue and groove boards available.



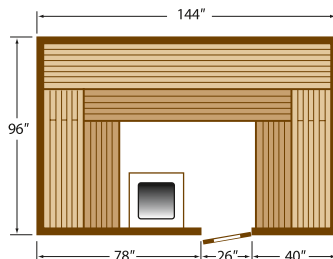
1" X 4" CLEAR WESTERN RED CEDAR (STANDARD)

1" X 4" CLEAR ALASKA YELLOW CEDAR

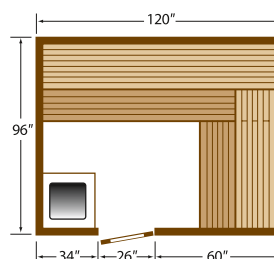
1" X 4" CLEAR REDWOOD

1" X 4" CLEAR WESTERN HEMLOCK

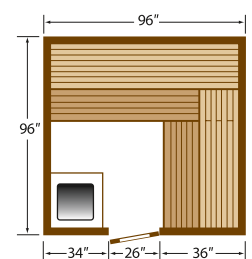
All paneling is actual 11/16" thickness.



FPF 812 Exterior Dimensions
Seats 12 people. K15G Heater.



FPF 810 Exterior Dimensions
Seats 8 to 9 people. K12.5G Heater.



FPF 88 Exterior Dimensions
Seats 7 to 8 people. K10G Htr.

FPF = Finlandia Prefab Modular Sauna



FPF66 SHOWN WITH OPTIONAL BENCH SKIRT, BACKREST, COPPER BUCKET, DIPPER AND STAINLESS STEEL HEATER.



FPF56 SHOWN WITH OPTIONAL WALL CONTROL, CEDAR VENT, 12"X60" CLEAR SIDELIGHT, BENCH SKIRT, AND CEDAR EXTERIOR.



FPF44-5S 5-SIDED SAUNA WITH CEDAR EXTERIOR, 12"X30" WINDOW, AND OPTIONAL FINNISH ALL GLASS DOOR.



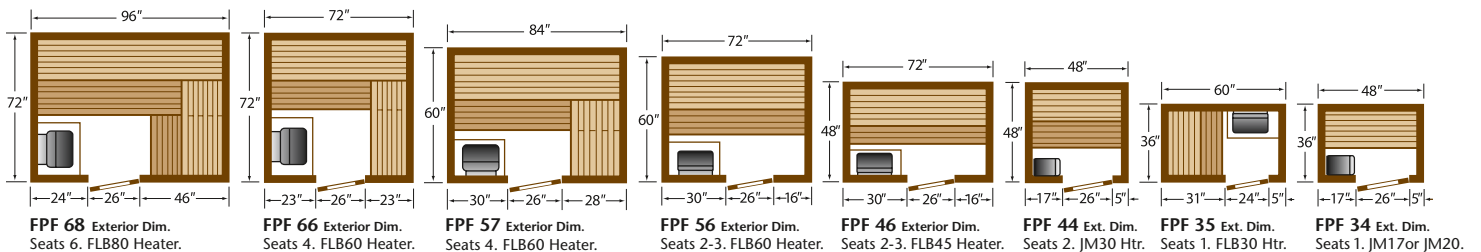
FPF46 WITH 1"X4" CLEAR REDWOOD INTERIOR. SHOWN WITH OPTIONAL COPPER ACCESSORIES.



FPF68 SHOWN WITH OPTIONAL 12"X30" WINDOWS, MT. HOOD GLASS, AND CEDAR EXTERIOR.

INTERIOR LAYOUT OF FPF68 SAUNA ROOM

DIMENSIONS SHOWN IN DIAGRAMS ARE FINISHED EXTERIOR DIMENSIONS AND ARE EXAMPLES ONLY—CUSTOM SIZES ARE AVAILABLE. STANDARD HEATER MODELS ARE INDICATED FOR EACH EXAMPLE.



Our prefab modular saunas are available in many standard sizes, or we can build them to your custom dimensions.