

We have built our reputation as “old country” Sauna builders since 1964, by believing that it takes individual attention to provide each customer with a quality piece of workmanship. Our FINLANDIA Sauna packages are custom cut with special care and experienced craftsmanship. It’s the little extras that count—so we take the extra effort—such as nailing our benches from the bottom to make sure that our customers will have no worries (or burns) from protruding nails. We countersink any surface nails, and we fill any visible nail holes.

FPC Packages Include:

PRECUT WALL & CEILING BOARDS: 1"x4" clear, certified, kiln-dried, T&G boards, cut to full length of wall and ceiling for horizontal installation. Choice of 4 woods. Cedar is standard.

ASSEMBLED BENCHES: Clear V.G. S4S kiln-dried 2"x2" tops with 3/8" spacing, and 2"x4" facing (much superior to standard 1"x4" light-weight benches, in design and strength). See page 22.

PREHUNG CLEAR GLASS DOOR: 2'0" x 6'8" as per specs page 19. Interior casing ONLY.

ASSEMBLED HEATER FENCE

ASSEMBLED HEADREST/BACKRESTS: For upper bench(es).

TRIM AND BASE

SUPER DEK or EURODEK: Per specs page 22. (Enough for walking area of floor).

FINLANDIA HEATER: Controls on heater standard up to 7'x8' room.

PERIDOTITE STONES

CONTROL/CONTACTOR: (if required by heater).

LIGHT: Wall mounted, vapor-proof.

VENTS: Two sets (V10 white); for installation in upper and lower wall areas. Option—V5 cedar vents.

ACCESSORIES: Wooden thermometer #0301K, wooden bucket #102N with bucket liner, wooden dipper #106/40, bathing sign.

TYPE C BUILDING FOIL

INSTRUCTIONS: DVD for building.

FASTENERS: Included. 5d galvanized nails for paneling per request only.

FPC BOARDS ARE CUT FOR HORIZONTAL INSTALLATION.

(Vertical available as an option.)



FPC BOARDS ARE CUT FOR **HORIZONTAL** INSTALLATION. STANDARD WESTERN RED CEDAR INTERIOR WITH OPTIONAL BACKRESTS.

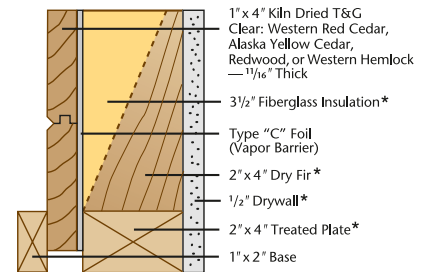
In preparation for our FPC package, frame and insulate your space and follow general contract-or specifications on the back cover. Only standard carpentry skills are needed for installation.



FPC FINLANDIA PRECUT PACKAGE IN STANDARD WESTERN RED CEDAR.

FPC CONSTRUCTION

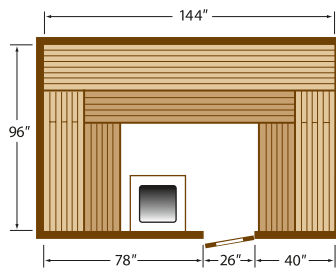
All FINLANDIA material packages are made to order. Our precut packages are intended for use in a space that you have framed and insulated. Anyone with general carpentry experience can build a Sauna out of our FPC parts. Supply us with your interior stud to stud dimensions and we supply all the interior room parts. Nail our 1"x4" tongue and groove boards to your studs; **our boards will run horizontally.** We cut the material and build parts to fit your room; we don't just supply a pile of lumber and unassembled pieces.



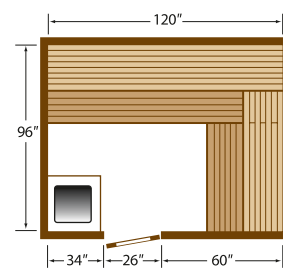
*From other suppliers



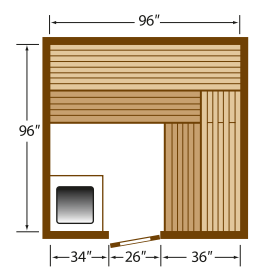
FPC OF WESTERN RED CEDAR.



FPC 812 Your Interior Framing Dimensions
Seats 12 people. K15G Heater.



FPC 810 Your Interior Framing Dim.
Seats 8 to 9 people. K12.5G Heater.



FPC 88 Your Int. Framing Dim.
Seats 7 to 8 people. K10G Htr.

FPC = Finlandia Precut Sauna Package

Proudly Made in the U.S.A.

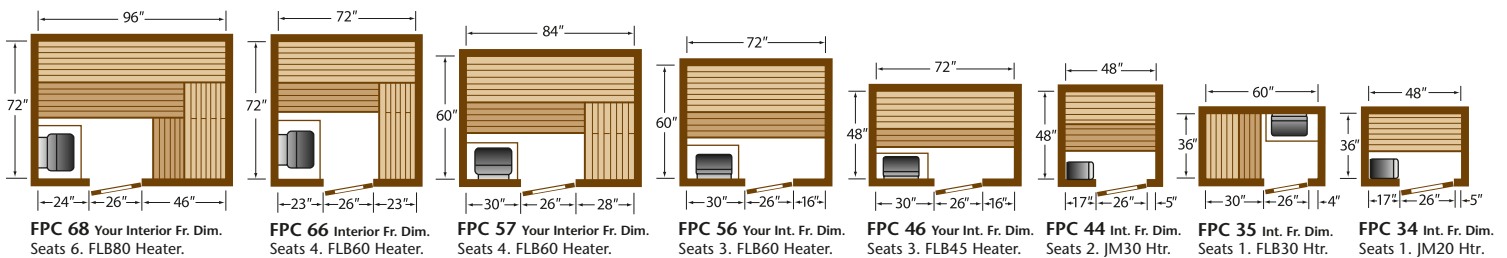


OPTIONAL CURVED WOODEN LIGHT SHADE FITS OVER P5511 WALL LIGHT.



ABOVE: PRECUT (FPC) WESTERN RED CEDAR SAUNA WITH CUSTOM PERMANENT BACKREST AND BENCH SKIRT.

DIMENSIONS SHOWN IN DIAGRAMS ARE YOUR INTERIOR FRAME TO FRAME DIMENSIONS AND ARE EXAMPLES ONLY—WE CAN CUT TO ANY CUSTOM SIZE. STANDARD HEATER MODELS ARE INDICATED FOR EACH ROOM.



You frame and insulate, we furnish interior parts only—precut to size per the standard sizes shown in the plans, or we will cut to fit your custom interior dimensions.